

**Partner Serwis – Professional and comprehensive maintenance services for the industry.**



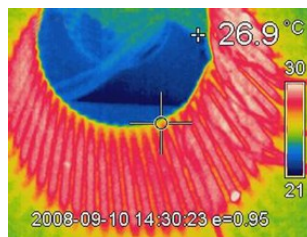
Partner Serwis was established in 1997 and currently employs around 500 employees in seven locations. The main activity of Partner Serwis involves productive maintenance services for industrial companies. We perform services at our shops as well as on-site. Our range of services is designed and developed to best assist our Clients in maintenance of machinery and production equipment.

Our range of services includes:

1. **Maintenance services** for production plants including full or partial productive maintenance.
  - transformation of internal maintenance organization into a production asset management unit,
  - management of processes and equipment aimed to enhance efficiency and optimize costs,
  - development and implementation of the highest standards of maintenance, management strategies and modern tools,
  - provision of industry-specific knowledge and expertise,
  - application of theories and systems in a form tailored to the Client's needs.



2. **Comprehensive Drive System Service (CDSS)**
  - **electrical machinery** of any type and power - from a few kilowatts to several MW
    - overhauls performed in the shop and on-site,
    - mechanical and electrical repairs (rewinding)
    - diagnostics,
    - setting, including a laser alignment,
    - supply of new elements,
  - **pumps, fans and gears,**
    - shop maintenance,
    - repairs,
    - diagnostics,
    - modernization,
  - **static converters** (inverters, DC power supplies)
    - maintenance,
    - repair service,
    - delivery of new elements,
    - modernization,



### 3. Safety

- Technical consultancy,
- audits,
- adaptation to the current standards,
- trainings,



### 4. Large-size machine tools

- modernization of control systems,
- replacement of drives,
- precision geometry measurements,
- mechanical repairs,
- setting of machinery and equipment,



### 5. Lifting equipment

- inspections,
- maintenance,
- repairs,
- design,
- agreements with Technical Supervision Authority,
- modernization of drive and control systems,



### 6. Eddy current starters for start-ups of large electrical machinery

- selection and design,
- production,
- installation,
- start-up,



### 7. Electric power

- modernization as well as production and distribution of MV and LV switchgears (SCAE, Siemens S4),
- construction of industrial power and control networks,
- electric power maintenance,
- renovations and maintenance works in maintenance processes,
- switchgear diagnostics,
- thermography,
- security measurements and tests,
- industrial network parameter measurements,



We serve a broad spectrum of clients in the following industries: mining (coal and lignite mines, KGHM Polska Miedź, Kompania Węglowa, Katowicki Holding Węglowy), steel (ArcelorMittal, KGHM Polska Miedź), engineering (Alstom, FLSMaag Gear), food (CocaCola, PepsiCo), construction (Paroc, Lafarge, Kronospan, Rockwool, Saint Gobain), paper (International Paper, Stora Enso, Arctic Paper) and automotive (Michelin, Bridgestone).



Our quality management system and care for the environment have been confirmed by ISO 9001:2001 and ISO 14000:2004 issued by Bureau Veritas.

We hope that our wide range of services will meet your interest.

For more information, please visit [www.grupapartner.pl](http://www.grupapartner.pl)